

NISSAN  INTELLIGENT MOBILITY™

Nissan Intelligent Mobility guides everything we do. We're using new technologies to transform cars from mere driving machines into partners. Together the journey is more confident, connected, and exciting. Whether it's cars that share the task of driving with you, or highways that charge your EV as you go along, it's all in the very near future. And it's a future already taking shape in the Nissan you drive today.



Innovation
that excites

2018
VERSA® NOTE®



Images may show additional available equipment. ¹Cargo and load capacity limited by weight and distribution. Always secure all cargo. ²Available feature. ³Never program while driving. GPS mapping may not be detailed in all areas or reflect current road status. ⁴Driving is serious business and requires your full attention. If you have to use the connected device while driving, exercise extreme caution at all times so full attention may be given to vehicle operation. External device not included. ⁵Parking aid/convenience feature. Cannot completely eliminate blind spots. May not detect every object and does not warn of moving objects. Always check surroundings and turn to look behind you before moving vehicle. ⁶Feature availability is dependent on vehicle model, trim level, packaging and options. Compatible connected device may be required and feature availability may be dependent on device's capability. Refer to connected device's Owner's Manual for details. Late availability for some features. **Driving is serious business and requires your full attention.** Only use features and connected devices when safe and legal to do so. Some features are dependent upon the telematics device being in operative condition, its ability to connect to a wireless network, compatible wireless network availability, navigation map data and GPS satellite signal receptions, the absence of which can limit or prevent the ability to reach Customer Care or receive support. GPS mapping may not be detailed in all areas or reflect current road status. Never program GPS while driving. Some services and features are provided by independent companies not within Nissan's control. **Should service provider terminate or restrict service or features, service or features may be suspended or terminated without notice or with no liability to Nissan or its partners or agents.** Services and features may require compatible cellular network provided by independent companies not within Nissan or its partners' or agents' control. Cellular network signal strength may vary and may not be available in all areas or at all times. Services and features may not function if cellular network is unavailable, restricted, or terminated. Nissan and its partners or agents are not responsible for associated costs or other third party changes that may be required for continued operation due to cellular network unavailability, restriction, or termination (including equipment replacements/upgrades, if available, or roaming charges on alternative networks). Technology is evolving, and changes by independent companies are not within Nissan's or its partners' or agents' control. Enrollment, owner consent, personal identification number (PIN), and subscription agreement may be required to receive full suite of features and services. Trial periods (if applicable) begin on the date of vehicle purchase or lease of a new Nissan. Trial periods may be subject to change at any time and may be subject to early termination without notice. Required subscriptions may be sold separately for each available feature or service after trial period ends, and may continue until you call service provider to cancel. Installation costs, one-time activation fee, other fees and taxes may apply. Fees and programming subject to change. Feature may be subject to age restrictions in some areas. Subscriptions governed by service provider's subscription agreement, terms and conditions and privacy statements available at service provider's website. Text rates or data usage may apply. The Nissan names, logos and slogans are trademarks owned by or licensed to Nissan Motor Co. Ltd. or its North American subsidiaries. Other trademarks and trade names are those of their respective owners. **For important safety information, system limitations, and additional operating and feature information, see Dealer or Owner's Manual.** ⁷VDC, which should remain on when driving except when freeing the vehicle from mud or snow, cannot prevent accidents due to abrupt steering, carelessness, or dangerous driving techniques. ⁸Brake Assist is only an aid to assist the driver and is not a collision warning or avoidance device. It is the driver's responsibility to be in control of the vehicle at all times. ⁹Airbags are only a supplemental restraint system; always wear your seat belt. Even with the occupant-classification sensor, rear-facing child restraints should not be placed in the front-passenger's seat. Also, in addition to any other requirement of applicable law, all children 12 and under should ride in the rear seat properly secured in child restraints, booster seats, or seat belts according to their size. Airbags will only inflate in certain accidents; see your Owner's Manual for more details. ¹⁰2018 Fuel Economy Estimate 6.2 L/100 km highway/7.6 L/100 km city for Versa® Note® with Xtronic CVT®. Actual mileage may vary with driving conditions – use for comparison only. ¹¹Virtual composite 360° view. ¹²Extra cost option. ¹³See your Nissan Dealership and read the actual limited warranty. ¹⁴Whichever occurs first. ¹⁵Use the Text Messaging feature after stopping your vehicle in a safe location. If you have to use the feature while driving, exercise extreme caution at all times so full attention may be given to vehicle operation. Compatible smartphone required. Text rates and/or data usage may apply. Bluetooth® is a registered trademark of Bluetooth SIG, Inc. Facebook® is a registered trademark of Facebook, Inc. Google® is a registered trademark of Google Inc. Instagram® is a registered trademark of Instagram, LLC. Siri® and Siri® Eyes Free are registered trademarks of Apple, Inc. The Sirius®, XM®, and SiriusXM® names and all related marks and logos are trademarks of Sirius XM Radio Inc. All other trademarks are the property of their respective owners. TripAdvisor® is a registered trademark of TripAdvisor LLC. Twitter® is a registered trademark of Twitter, Inc. YouTube® is a registered trademark of Google Inc. All illustrations, photographs and specifications in this brochure are based on the latest product information. See actual vehicle for complete accuracy. Nissan Canada Inc. reserves the right to make changes at any time, without notice, in prices, colours, materials, equipment, specifications and models, and to discontinue models or equipment. For information on additional options and accessories, contact your Nissan Dealership. Registered trademarks are property of their respective owners. At nissan.ca, you'll find a way to "build your own Nissan," a dealer locator, and more information about key Nissan support services. The Nissan names, logos, product names, feature names, and slogans are trademarks owned by or licensed to Nissan Motor Co. Ltd. and/or its North American subsidiaries. **Always wear your seat belt, and please drive responsibly.** Printed in October 2017. Catalogue number: 99999-VERN18EN. ©2017 Nissan Canada Inc. All rights reserved.

visit nissan.ca

BRING ON a spontaneous road trip. Grab your friends and all their gear – you’ve got the room.¹ Forget the itinerary, and play it by ear with directions^{2,3} and music you can change on the fly.⁴ Pit stop: catch that show downtown. Pull into that tight spot, cameras all around make parking a piece of cake.^{2,5} The 2018 Nissan Versa® Note®. Ready for life in **THE NOW.**



Nissan Versa® Note® SR shown in Deep Blue Pearl.

Smart design opens up the surprisingly spacious cabin, giving everyone ample room to spread out.

Enjoy seating for five and 97.3 cm (38.3 inches) of rear leg room for even your tallest friends. Up front, the bolstered driver's seat hugs you as you carve through the turns. Features like a leather-wrapped steering wheel, double-stitched upholstery, and silver and chrome accents add a touch of class.² With Push Button Start, you'll never dig for your keys again.² Top it off with heated front seats, and every trip will be as cozy as it is cool.² Just don't be surprised when your friends ask for a ride – again.



Nissan Versa® Note® SR shown in Charcoal Cloth. U.S. instrumentation shown.



NissanConnect

YOUR WORLD, AT YOUR FINGERTIPS

With NissanConnect with Mobile Apps, your Versa® Note® becomes your smartphone's best friend. Which means no more separation anxiety for you. Because now, your own hand-picked music, latest tweets, TripAdvisor® tips, Facebook® events, and more all come along for the ride, working seamlessly together.^{2,6}

NISSAN SAFETY SHIELD PHILOSOPHY

INNOVATION THAT LOOKS OUT FOR YOU

What if you had the confidence you need for every part of your drive? The Nissan Safety Shield philosophy is a comprehensive approach to safety that guides the engineering and development of every vehicle we make.

- Vehicle Dynamic Control (VDC)⁷
- Traction Control System (TCS)
- Anti-lock Braking System (ABS)
- Electronic Brake force Distribution (EBD)
- Brake Assist⁸
- Six Standard Airbags⁹
- LATCH System
(Lower Anchors and Tethers for Children)



SAFETY SHIELD



GO THE DISTANCE

Wouldn't it be cool if you could get up to 6.2 L/100 km (46 MPG) highway in a roomy, comfortable car that's lots of fun to drive? With Versa Note, you can. We got there by developing everything from exterior aerodynamics that whisper through the wind, to an advanced 1.6-litre 4-cylinder engine, to a virtually gearless Xtronic CVT® transmission that maximizes efficiency and performance.¹⁰

Continuously Variable
Transmission (CVT)

Aerodynamic
design

6.2 L/100 KM

(46 MPG)¹⁰



ADAPT IN A SNAP

When living in the moment is all part of the plan, Versa Note has your cargo needs covered with the super-versatile Divide-N-Hide® Adjustable Floor.² Lower the floor to accommodate taller items, or lift it up to find a convenient hiding place. Plus, the rear 60/40 split seats let you bring friends and oversized items. Or fold down both sides to create a flat cargo area.¹



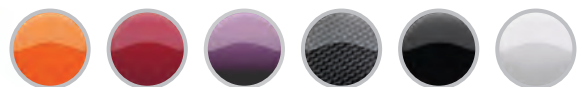
SNAG THAT SPOT

Parallel parking just got a whole lot easier, thanks to Versa Note's Around View® Monitor.^{2,5} Four cameras give you a virtual 360° bird's-eye view of your vehicle, with selectable split-screen close-ups of the front, rear, and curbside views, so you can get a better look.¹¹



VERSA® NOTE® COLOUR STUDIO®

With Versa Note Colour Studio, you can make your Versa Note one of a kind. Choose from a selection of accents and finishers, including side mirror caps, door handle covers, a rear roof spoiler, and more, along with colour-coordinated 15" alloy wheels. Pick one or more. Choose one or all of the colours.



Nissan has taken care to ensure that the colour swatches presented here are the closest possible representations of actual vehicle colours. Swatches may vary slightly due to the printing process and whether viewed in daylight, fluorescent or incandescent light. Please see the actual colours at your local Nissan dealer.



BLUETOOTH®⁶



SIRI® EYES FREE®⁶



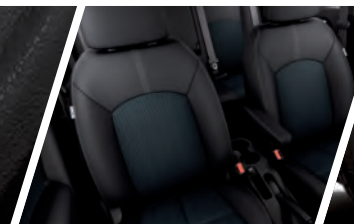
REARVIEW MONITOR®⁵



HEATED FRONT SEATS



UPGRADED SEATING



15" ALUMINUM-ALLOY WHEELS



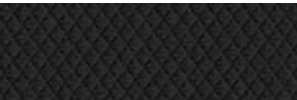
SV FEATURES: TRANSFORM YOUR DRIVE

Standard on Versa Note SV, premium perks keep you comfy, connected, and help keep an eye out. Let your friends play DJ with any Bluetooth®-compatible device.⁶ And with Siri® Eyes Free,⁶ you can make calls, send texts, update your calendar, and more – at the touch of a button.



Nissan Versa® Note® SV shown in Monarch Orange with accessory Rear Roof Spoiler.

PAINT AND FABRIC



S Charcoal Cloth



SV Charcoal Cloth



SR Charcoal Cloth

Nissan has taken care to ensure that the colour swatches presented here are the closest possible representations of actual vehicle colours. Swatches may vary slightly due to the printing process and whether viewed in daylight, fluorescent or incandescent light. Please see the actual colours at your local Nissan dealer.

■ Standard

CHARCOAL CLOTH

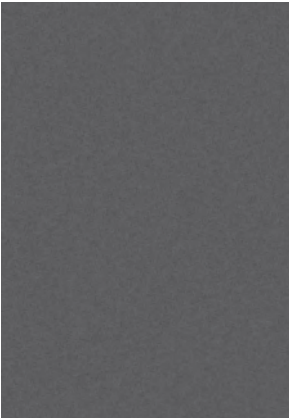


Aspen White¹² QAC

S

SV

SR



Gun Metallic¹² KAD

S

SV

SR



Monarch Orange¹² EBB

S

SV

SR



Cayenne Red¹² NAH

S

SV

SR

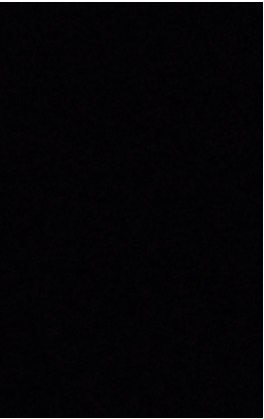


Deep Blue Pearl¹² RAY

S

SV

SR



Super Black KH3

S

SV

SR

GENUINE NISSAN ACCESSORIES

Every Genuine Nissan Accessory is: custom-fit, custom-designed and durability-tested; available for finance and backed by Nissan's 3 year/60,000 km Accessories limited warranty when installed by dealer at time of your vehicle purchase.¹³

A. **15" Black Aluminum-alloy Wheels**
Step up your style.

B. **Interior Ambient Lighting**
Bring a bit of the club along for the drive.

C. **Rear Roof Spoiler**
Go ahead, spoil yourself.

D. **All-season Rubber Floor Mats**
Bring on the weather.

Additional Accessories:

- Portable Cargo Organizer (Black)¹
- Interior Trim Appliqués
- Illuminated Kick Plates
- Rear Cargo Cover
- Carpeted Cargo Mat
- Door Handle Accents
- Rear Hatch Accent
- Rearview Mirror Cover
- Stainless Steel Exhaust Finisher
- And More



See your Nissan dealer for details, or go to accessories.nissan.ca

BUYING AND OWNING

Finance Options Through Nissan Canada Finance, we offer many attractive lease and loan options that can be tailored to your individual needs. We have unique programs such as the Nissan Grad Program, Loyalty Program or the Nissan Advantage Program. Please visit our website **Nissan.ca/finance** to explore all of the options available. We have also made it easy to pre-qualify online. All of our programs come with competitive rates and terms. With our flexible options, driving home a new Nissan has never been easier. Consult your local Nissan Dealership for complete details.

No-Nonsense Warranty Every 2018 Nissan is covered by a 3 year/60,000 km¹⁴ Comprehensive New Vehicle Warranty, a 5 year/100,000 km¹⁴ Powertrain Warranty, an 8 year/130,000 km¹⁴ Emission Grad Control Warranty on selected components, and a 5 year/unlimited km Corrosion Perforation Warranty. As a Nissan owner, you'll also receive a 3 year Roadside Assistance program available to you 24 hours a day. Terms, conditions and exclusions apply. See your Warranty Information Booklet for complete details.

Added Security Plan (ASP) For ultimate peace of mind, consider the Nissan Added Security Plan. It's our commitment to be there for you, and to help you leave your worries behind. Different plans, available for both purchased and leased vehicles, let you tailor the coverage to your driving habits.

Security+Plus™ Prepaid Maintenance Plan The smart choice when it comes to maintaining your new Nissan. Honoured at all participating Nissan Dealers in Canada and the U.S., your vehicle is cared for by factory-trained technicians using Genuine Nissan Parts. And best of all, there's no worrying about price increases on parts or service in the future. A variety of plans are available. Ask your Dealer for details.



Nissan's environmental action plan focuses on several key areas. In addition to increasing production of Zero Emission vehicles like the 100% electric LEAF,[®] we're improving fuel efficiency across our lineup, and reducing the environmental impact of manufacturing through energy-efficient practices in our plants.



CHOOSE YOUR TRIM LEVEL

S

- 1.6-litre 4-cylinder engine
- 5-speed manual transmission or Xtronic CVT® (Continuously Variable Transmission)
- 15" x 5.5" steel wheels with wheel covers
- P185/65HR15 all-season low rolling resistance tires
- Dual power heated outside mirrors
- Bluetooth® Hands Free Phone System⁶
- Air conditioning
- Fine Vision electroluminescent gauges
- Cup holders in centre console

- 60/40 Split fold-down rear seats
- AM/FM/CD audio system with auxiliary audio input jack⁴
- MP3/WMA CD playback capability
- Illuminated steering wheel-mounted audio controls
- 4-wheel Anti-lock Braking System (ABS)
- Vehicle Dynamic Control (VDC)⁷ with Traction Control System (TCS)
- Nissan Advanced Airbag System⁹



SV

INCLUDES S EQUIPMENT PLUS:

- 15" x 5.5" aluminum-alloy wheels
- 127 mm (5.0") colour display audio
- Premium AM/FM/CD audio system
- Hands-free Text Messaging Assistant¹⁵
- Streaming audio via Bluetooth® wireless technology⁶
- SiriusXM® Satellite Radio⁶
- RearView Monitor⁵
- Upgraded Fine Vision electroluminescent gauges with trip computer and outside temperature display
- Integrated Key with remote keyless entry
- Power windows and door locks
- Heated front seats

- Cruise control
- USB connection port for smartphone interface and other compatible devices⁴
- Siri® Eyes Free⁶
- Divide-N-Hide® Adjustable Floor
- 6-way manual driver's seat with armrest and upgraded cloth seat and door trim
- Leather-wrapped steering wheel
- Piano Black trim and silver accents on shift knob and shift surround
- Rear-seat fold-down centre armrest with cup holders
- Chrome inside door handles and chrome-accented centre vents



SR

INCLUDES SV EQUIPMENT PLUS:

- Xtronic CVT® (Continuously Variable Transmission)
- 16" x 6.0" machine-finished split 5-spoke aluminum-alloy wheels
- P195/55HR16 all-season low rolling resistance tires
- Sport side sills
- Fog lights
- Dual power outside mirrors with LED turn signals
- Rear roof spoiler

- NissanConnectSM with Navigation and Mobile Apps with 147 mm (5.8") colour touch-screen⁶
- SiriusXM® Traffic⁶
- Around View® Monitor⁵
- Nissan Intelligent Key® with Push Button Ignition
- Suede-like seat fabric with colour accents and stitching
- Leather-wrapped sport steering wheel



Nissan Versa® Note® SR shown in Charcoal Cloth. U.S. instrumentation shown.

SPECIFICATIONS

Engine	S	SV	SR
HR16DE – 1.6-litre DOHC 16-valve 4-cylinder engine	■	■	■
— Horsepower – 109 HP @ 6000 rpm			
— Torque – 107 lb.-ft. @ 4400 rpm			
Emissions – Tier 2-Bin 5 (EPA); LEV2-ULEV (CARB)	■	■	■
Dual injector system	■	■	■
Continuously Variable Valve Timing Control System (CVTCS) on intake and exhaust valves	■	■	■
Nissan Direct Ignition System	■	■	■
Platinum-tipped spark plugs	■	■	■
Electronic drive-by-wire throttle	■	■	■

Drivetrain			
Front engine/Front-Wheel Drive	■	■	■
5-speed manual transmission	■	■	
Xtronic CVT® (Continuously Variable Transmission)	□	□	■

Brakes			
Vented front disc/rear drum brakes	■	■	■
4-wheel Anti-lock Braking System (ABS)	■	■	■
Electronic Brake force Distribution (EBD)	■	■	■
Brake Assist ^a	■	■	■

Suspension/Chassis Bracing/Steering			
Independent strut front suspension with stabilizer bar	■	■	■
Torsion beam rear axle with integrated stabilizer bar	■	■	■
Vehicle-speed-sensitive electric power steering	■	■	■

Wheels/Tires			
15" x 5.5" steel wheels with wheel covers	■		
15" x 5.5" aluminum-alloy wheels		■	
16" x 6.0" aluminum-alloy wheels			■
P185/65HR15 all-season low rolling resistance tires	■	■	
P195/55HR16 all-season low rolling resistance tires			■

Exterior Features			
Multi-reflector halogen headlights	■	■	■
Aerodynamic taillights	■	■	■
Sport side sills			■
Fog lights			■
Dual power heated outside mirrors	■	■	
Dual power heated outside mirrors with LED turn signals			■
Rear roof spoiler			■

Comfort/Convenience			
NissanConnect SM with Navigation and Mobile Apps with 147 mm (5.8") colour touch-screen display and Nissan Voice Recognition for navigation and audio ^{3,6}			■
SiriusXM® Traffic ⁶			■
Siri® Eyes Free ⁶		■	■
Hands-free Text Messaging Assistant ¹⁵		■	■
RearView Monitor ⁵		■	■
Around View® Monitor ⁵			■

Comfort/Convenience (Continued)	S	SV	SR
Bluetooth® Hands Free Phone System ⁶	■	■	■
Fine Vision electroluminescent gauges with trip computer	■		
Upgraded Fine Vision electroluminescent gauges with 3-dial display, trip computer and outside temperature display		■	■
Air conditioning	■	■	■
Integrated Key with remote keyless entry		■	■
Nissan Intelligent Key® with Push Button Ignition			■
Power door locks with auto-locking feature		■	■
Power windows with driver's one-touch auto-down feature		■	■
Tilt steering column	■	■	■
Cruise control		■	■
Intermittent rear window wiper	■	■	■
Rear window defroster	■	■	■
Front map light	■	■	■
Cargo area light	■	■	■
Front door map pockets with bottle holders	■	■	■
Front cup holders in centre console	■	■	■
Rear cup holders in centre console	■		
Front passenger seatback map pockets	■	■	■
Divide-N-Hide® Adjustable Floor		■	■
Rear cargo cover		■	■
Sun visors with extensions	■		
Sun visors with vanity mirrors and extensions		■	■
Digital clock	■	■	■
Auxiliary 12-volt DC power outlet	■	■	■
Secondary 12-volt DC power outlet		■	■
Battery saver	■	■	■
Glove compartment damper		■	■

Seating/Appointments			
4-way manual driver's seat	■		
6-way manual driver's seat		■	■
Driver's seat armrest		■	■
Heated front seats		■	■
60/40 Split fold-down rear seats	■	■	■
Rear-seat centre armrest with cup holders		■	■
Cloth seat trim	■		
Upgraded cloth seat trim		■	
Suede-like seat fabric with colour accents and stitching			■
Cloth door trim accent		■	■
Leather-wrapped steering wheel		■	
Leather-wrapped sport steering wheel			■
Piano Black trim		■	■
Silver accents on dash and vent rings	■	■	■
Silver accents on CVT shift knob and shifter surround		□	■
Chrome inside door handles, chrome-accented centre vents		■	■
Printed non-woven headliner		■	■

Audio/Entertainment	S	SV	SR
AM/FM/CD audio system	■		
AM/FM/CD audio system with 127 mm (5.0") colour display		■	
AM/FM/CD audio system with 147 mm (5.8") colour touch-screen display			■
Four speakers		■	■
SiriusXM® Satellite Radio ⁶		■	■
Streaming audio via Bluetooth® wireless technology ⁶		■	■
MP3/WMA CD playback capability	■	■	■
Auxiliary audio input jack ⁴	■	■	■
USB connection port for smartphone interface and other compatible devices ⁴		■	■
Radio Data System (RDS)	■	■	■
Speed-sensitive volume control	■	■	■
Illuminated steering wheel-mounted audio controls	■	■	■

Safety/Security			
Nissan Advanced Airbag System with dual-stage supplemental front airbags with seat belt and occupant-classification sensors ⁹	■	■	■
Driver and front-passenger seat-mounted side-impact supplemental airbags ⁹	■	■	■
Roof-mounted curtain side-impact supplemental airbags for front- and rear-seat outboard occupant head protection ⁹	■	■	■
Vehicle Dynamic Control (VDC) ⁷ with Traction Control System (TCS)	■	■	■
3-point ALR/ELR passenger seat belt system (ELR for driver)	■	■	■
Height-adjustable front head restraints	■	■	■
Rear outboard head restraints	■	■	■
LATCH System (Lower Anchors and Tethers for CHildren)	■	■	■
Zone Body construction with front and rear crumple zones	■	■	■
Hood buckling creases and safety stops	■	■	■
Energy-absorbing steering column	■	■	■
Pipe-style steel side-door guard beams	■	■	■
Immobilizer Key System	■	■	■

■ Standard
□ Optional

DIMENSIONS/CAPACITIES/WEIGHTS/FUEL

Dimensions	
Exterior – mm (inches)	
Wheelbase	2600 (102.4)
Overall length	4157 (163.7)
Overall width	1695 (66.7)
Overall height	1537 (60.5)
Track width (front/rear)	1480 (58.3)/1485 (58.5)

Aerodynamics – Cd	
Drag coefficient (SR)	0.298 (0.310)

Interior (front/rear) – mm (inches)	
Head room	1037 (40.8)/964 (38.0)
Hip room	1233 (48.5)/1238 (48.8)
Leg room	1048 (41.3)/972.7 (38.3)
Shoulder room	1313 (51.7)/1318 (51.9)

Capacities	
Seating capacity	5
Interior passenger volume – L (cu. ft.)	2664.6 (94.1)
Cargo volume with rear seats up – L (cu. ft.)	532.4 (18.8)
Cargo volume with rear seats folded – L (cu. ft.)	1084 (38.3)
Fuel tank – L (Imp gal)	41.0 (9.0)

Curb Weights – kg (lbs.)			
Base total	S	SV	SR
Manual transmission	1092 (2406)	1107 (2440)	–
Xtronic CVT®	1109 (2445)	1124 (2479)	1142 (2518)

2018 Fuel Economy Estimates – L/100 km (MPG)	
City/Hwy	
Manual transmission	8.6 (33)/6.6 (43)
Xtronic CVT®	7.6 (37)/6.2 (46)
— Actual mileage may vary with driving conditions – use for comparison only.	

NISSAN VERSA® NOTE®

Isn't it time you were passionate about the car you drive?
Welcome to the 2018 Versa Note.

Follow Nissan Canada on:







